

# Presentation Title

A pre-application presentation to Derbyshire County Council members

on 27<sup>th</sup> September, 2012

relating to

**a proposal to extend quarry workings at Ben Bennett Junior Limited's Grange  
Mill Quarry  
near Wirksworth, Derbyshire**

by

Martin Clayton (Geoplan)

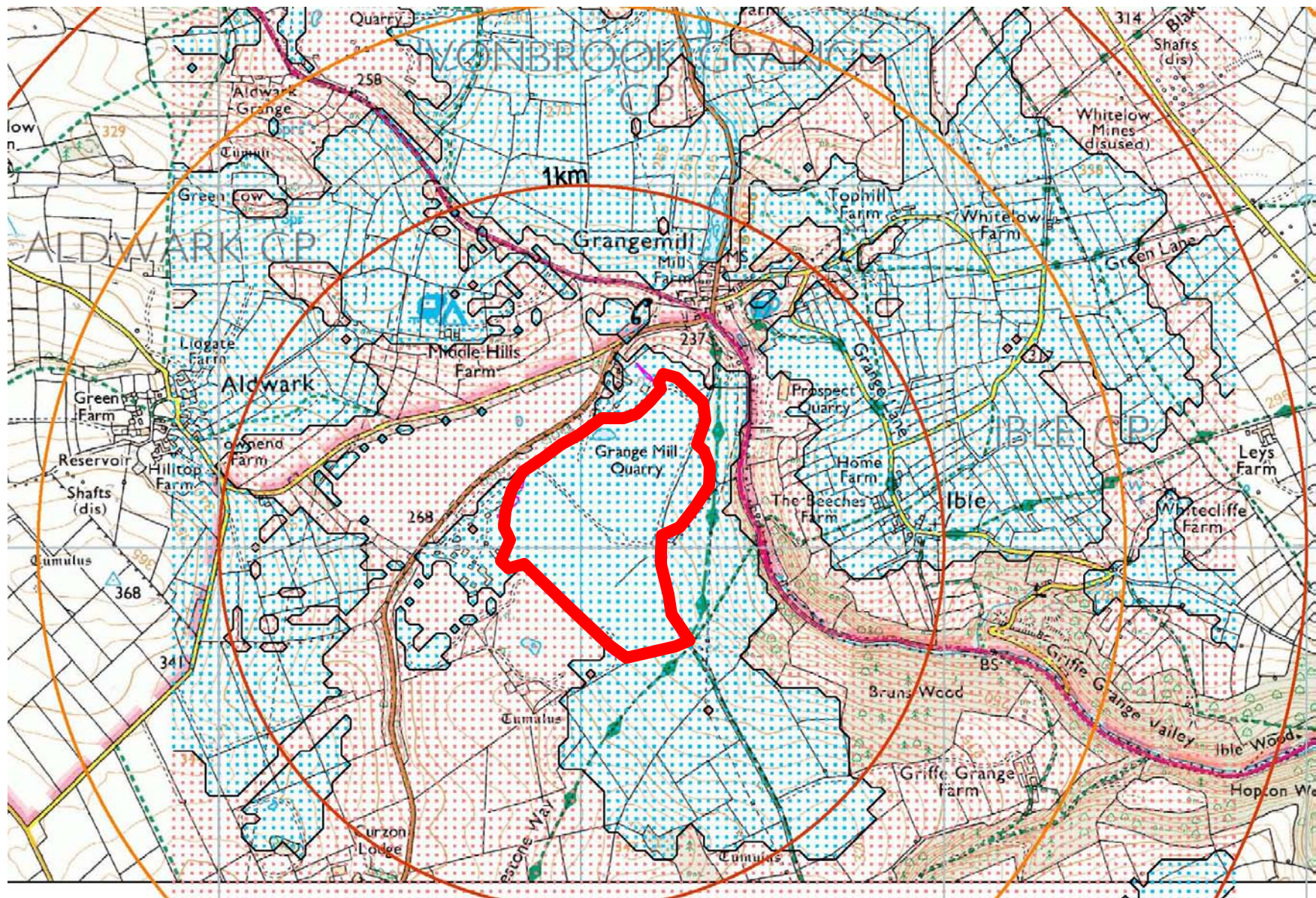
# Introductions

- Who are we?
  - Ben Bennett Jr Ltd – a local, privately owned independent company who have been operating Grange Mill Quarry for over 75 years. The company provides employment for up to 50 local people and supports numerous local small businesses in the area through services and materials it purchases.
  - Geoplan – A small local Natural Resource Consultancy providing planning geological and environmental services to the quarrying industry. Instructed to prepare the planning application and Environmental Statement for the development proposals.

# Grange Mill Quarry

- A unique Limestone quarry which provides a wide range of high purity high specification limestone products to the UK and overseas markets for use in the chemical, pharmaceutical and glass industries.
- The reserve at Grange Mill is over 98% Calcium Carbonate with very low lead content (in places less than 1ppm). Iron content is also low which is an important requirement in the manufacture of solar glass.
- The upper beds comprise lower grade materials which thin out dramatically towards the south east because of the topography of the site. The ratio of high purity limestone to lower grade limestone is 80%/20%. This is therefore NOT an application to release aggregate reserves. The company has no fixed contracts for the supply of aggregate.





Plan 1 : Location Plan



Quarry faces looking towards the proposed extension area

## Summary Proposal

### ■ Proposal

- Extend the life of planning permission WED/590/389 (which permits the working of OS field 2913) from 2013 to 2042, in line with the remainder of the quarry
- Extend quarry workings laterally in a south easterly direction over an area of 3.3 Ha (8acres)
- Restoration of the application area to agriculture and nature conservation in keeping with restoration concepts already approved for the adjacent Longcliffe quarry workings.
- No change in the day-to-day operation of the site in terms of operational practices, plant and machinery, output, traffic, hours of working.

# Existing Site





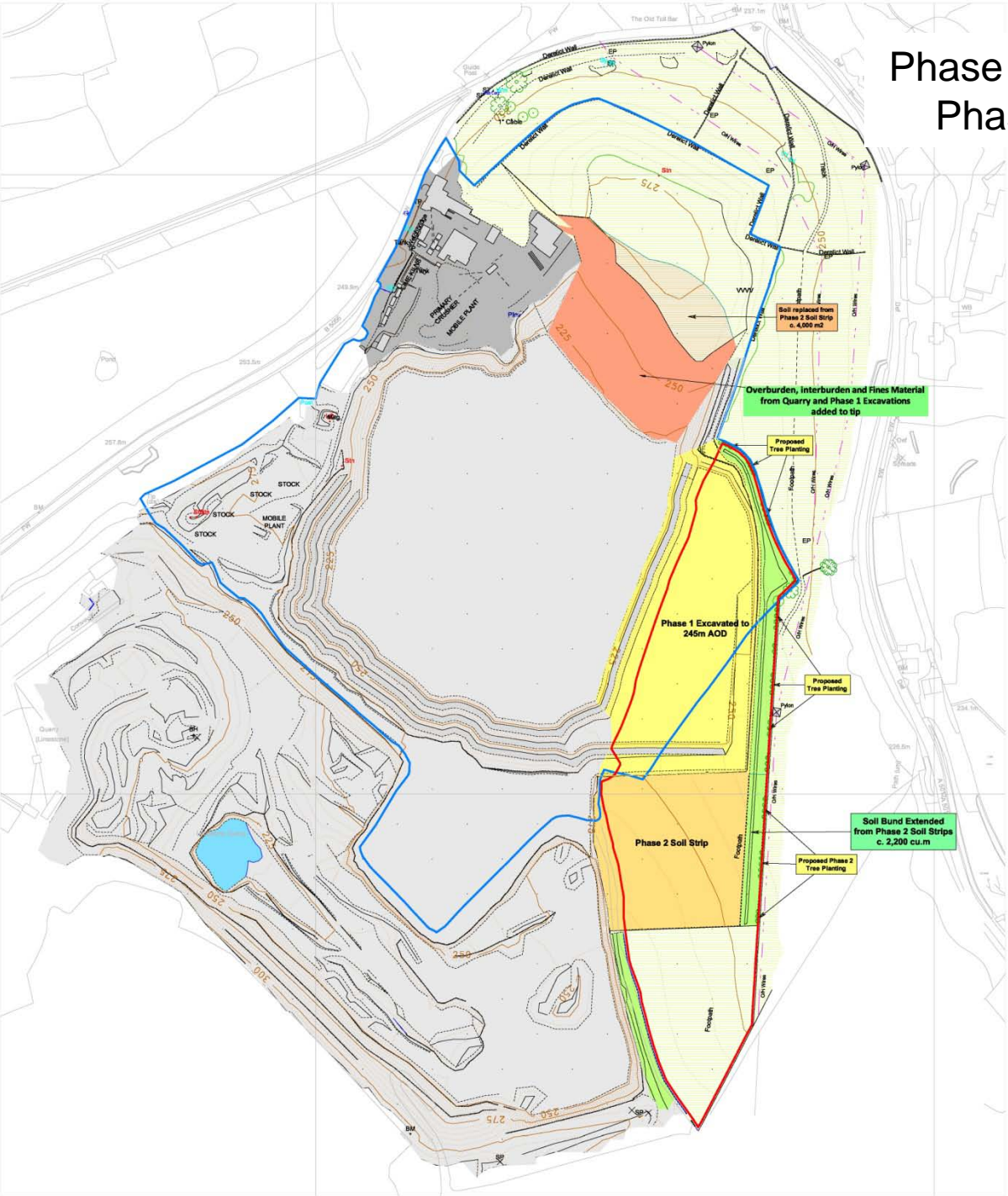
The proposed extension area



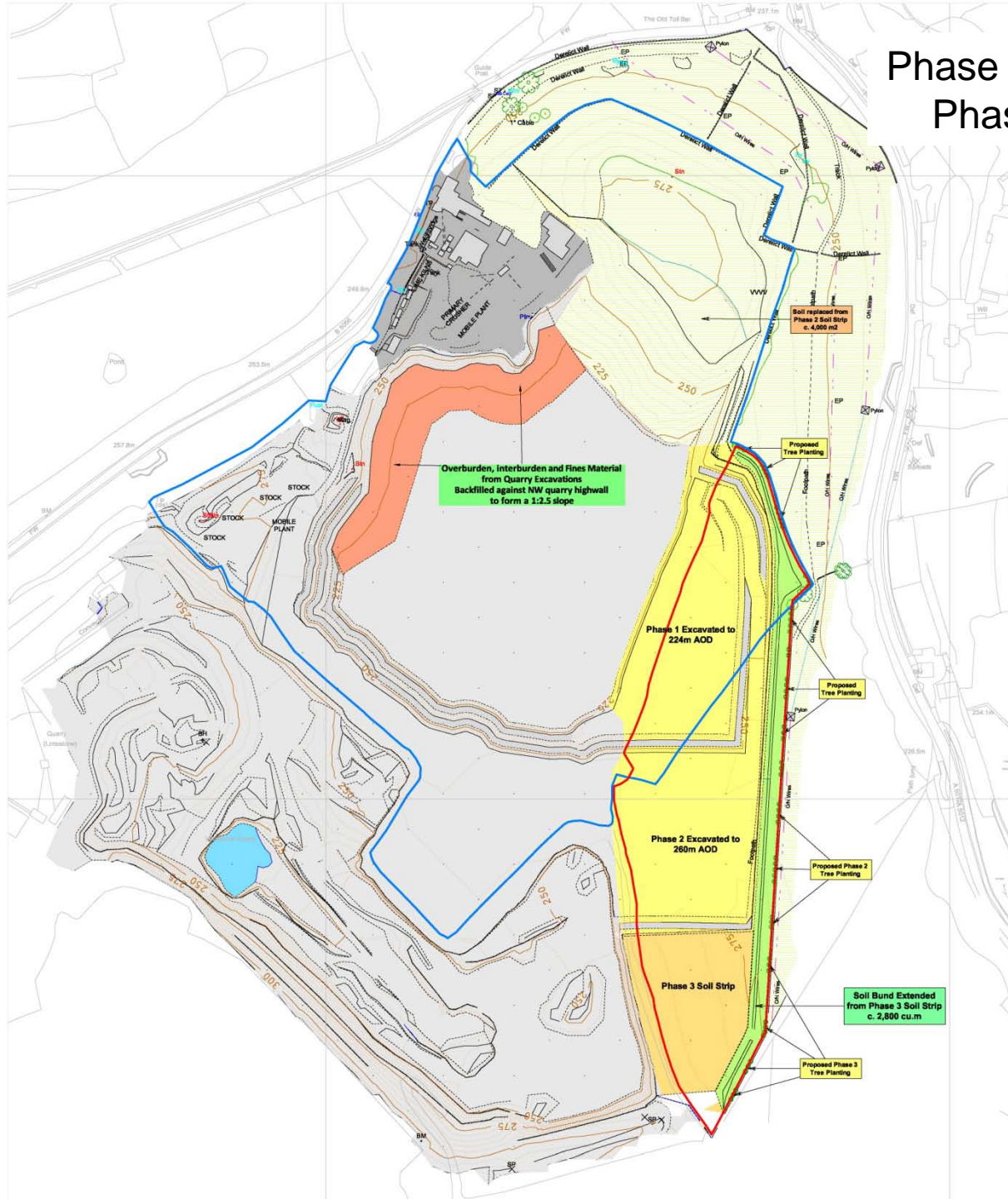
# Phase 1 Soil Strip



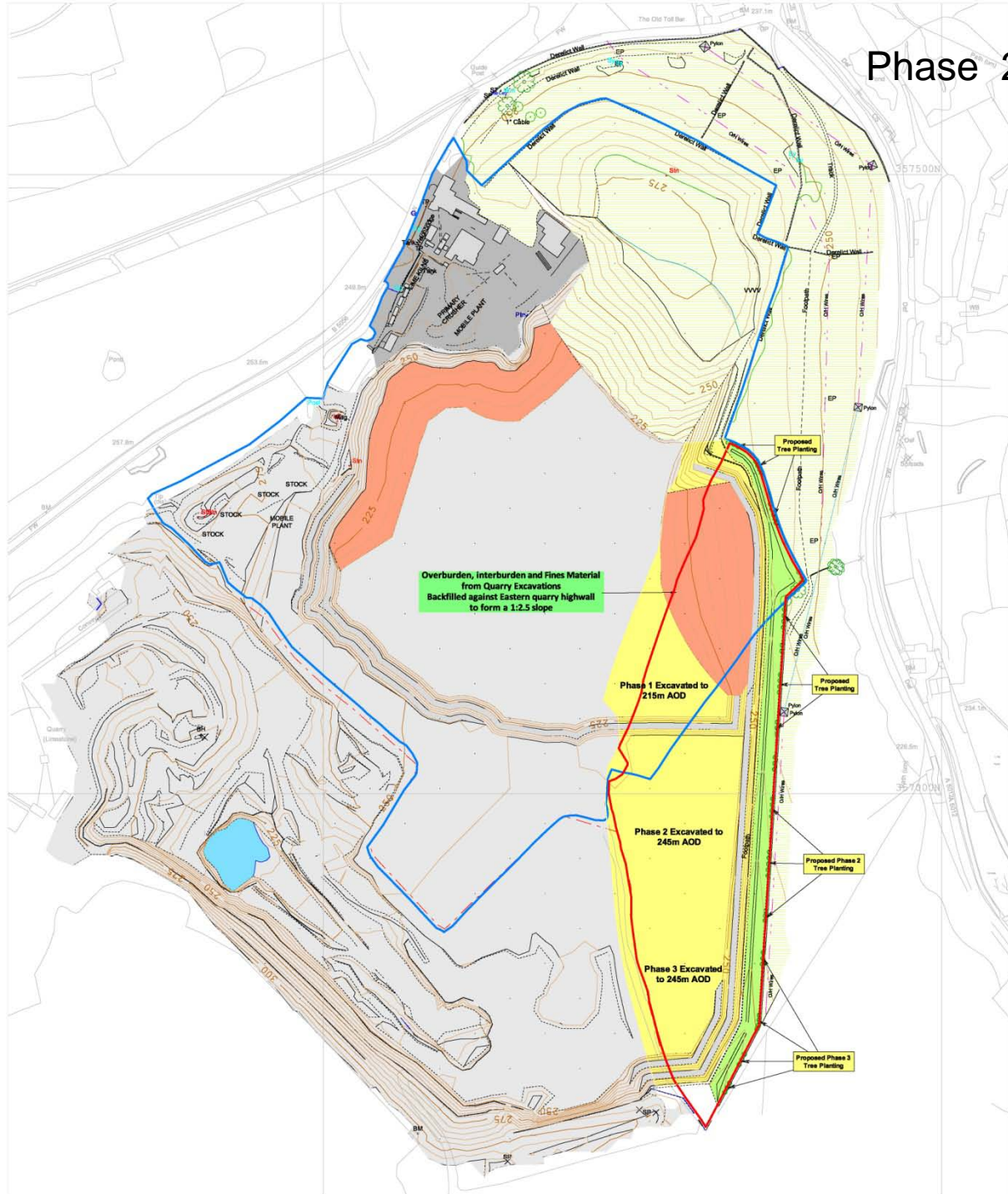
# Phase 2 Soil Strip and Phase 1 Working



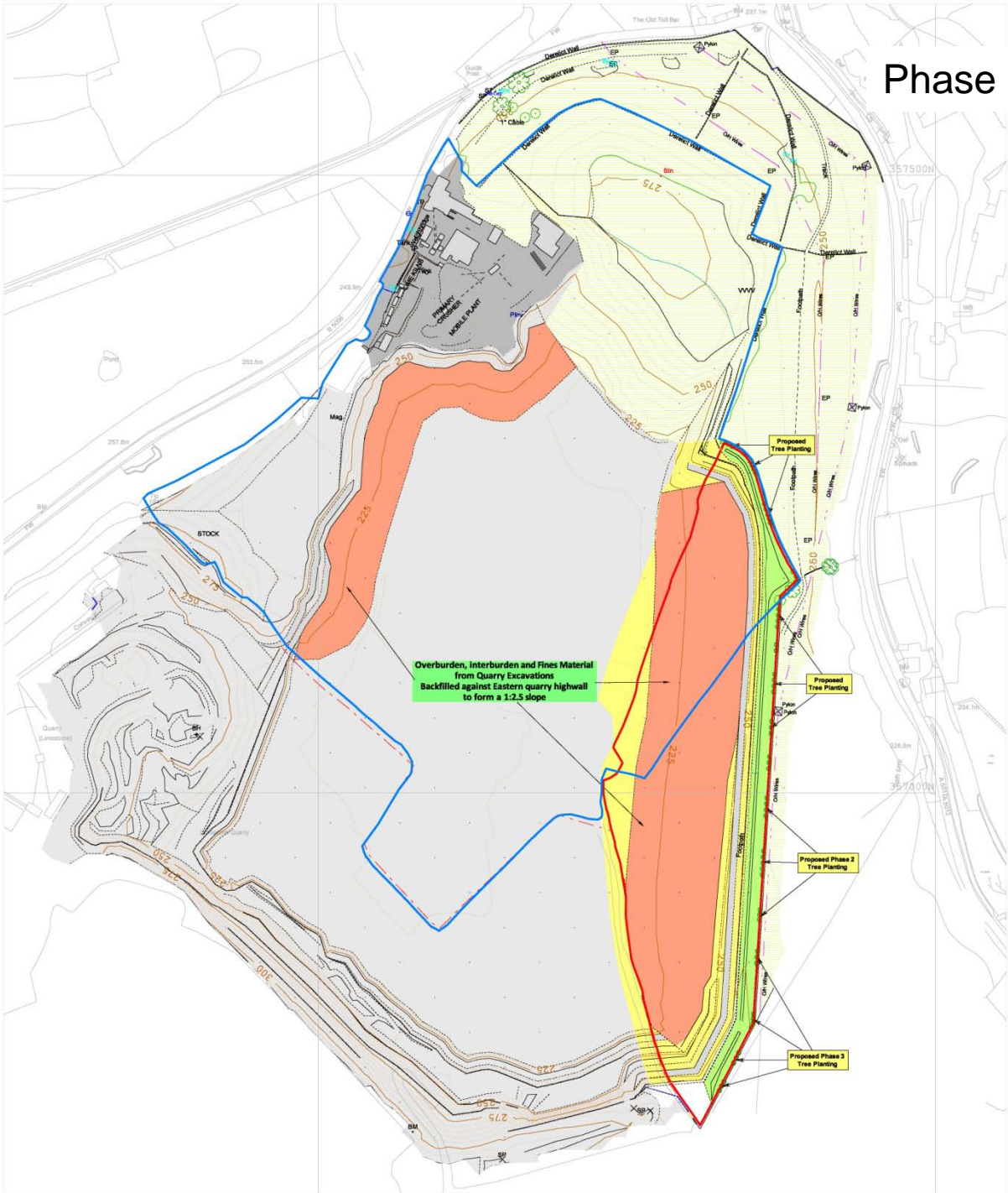
# Phase 3 Soil Strip and Phase 2 Working



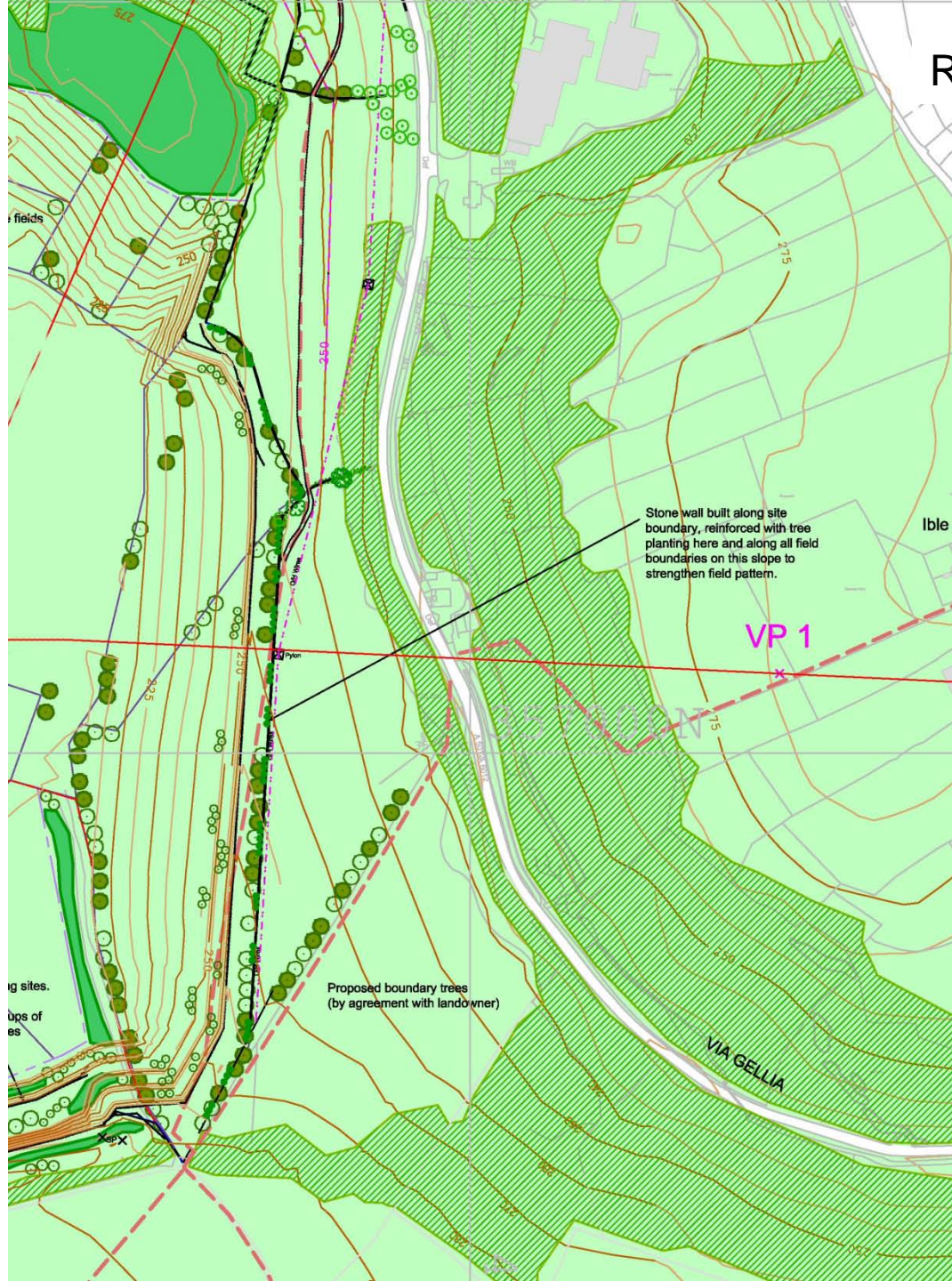
# Phase 2 and 3 Working



Phase 3 worked out



# Restoration Concept



Stone wall built along site boundary, reinforced with tree planting here and along all field boundaries on this slope to strengthen field pattern.

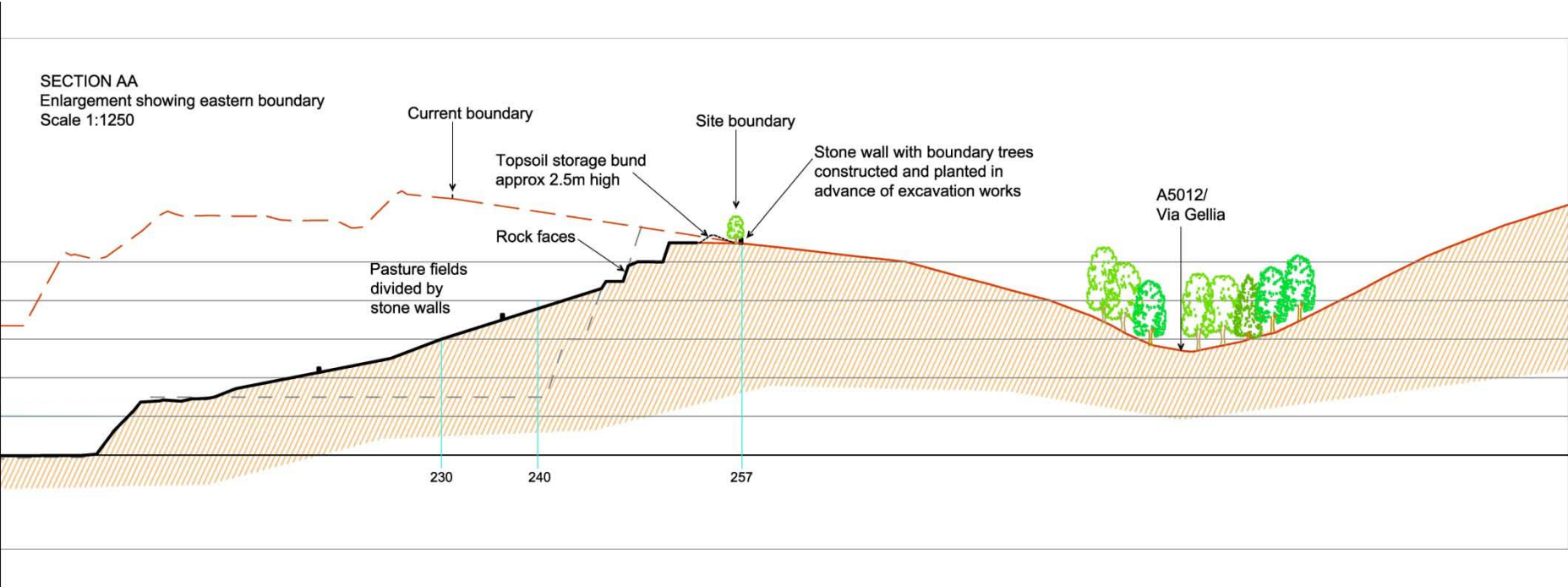
VP 1

Proposed boundary trees (by agreement with landowner)

g sites.  
ups of  
es

# Restoration Cross Section

SECTION AA  
Enlargement showing eastern boundary  
Scale 1:1250



# Environmental Statement

- Potential Key Impacts (without mitigation)
  - Visual Impact – Views from Ible village and PDNPA
  - Ecology – Peak District Dales SAC





title

Viewpoint one.  
From footpath below Ible.  
Panorama

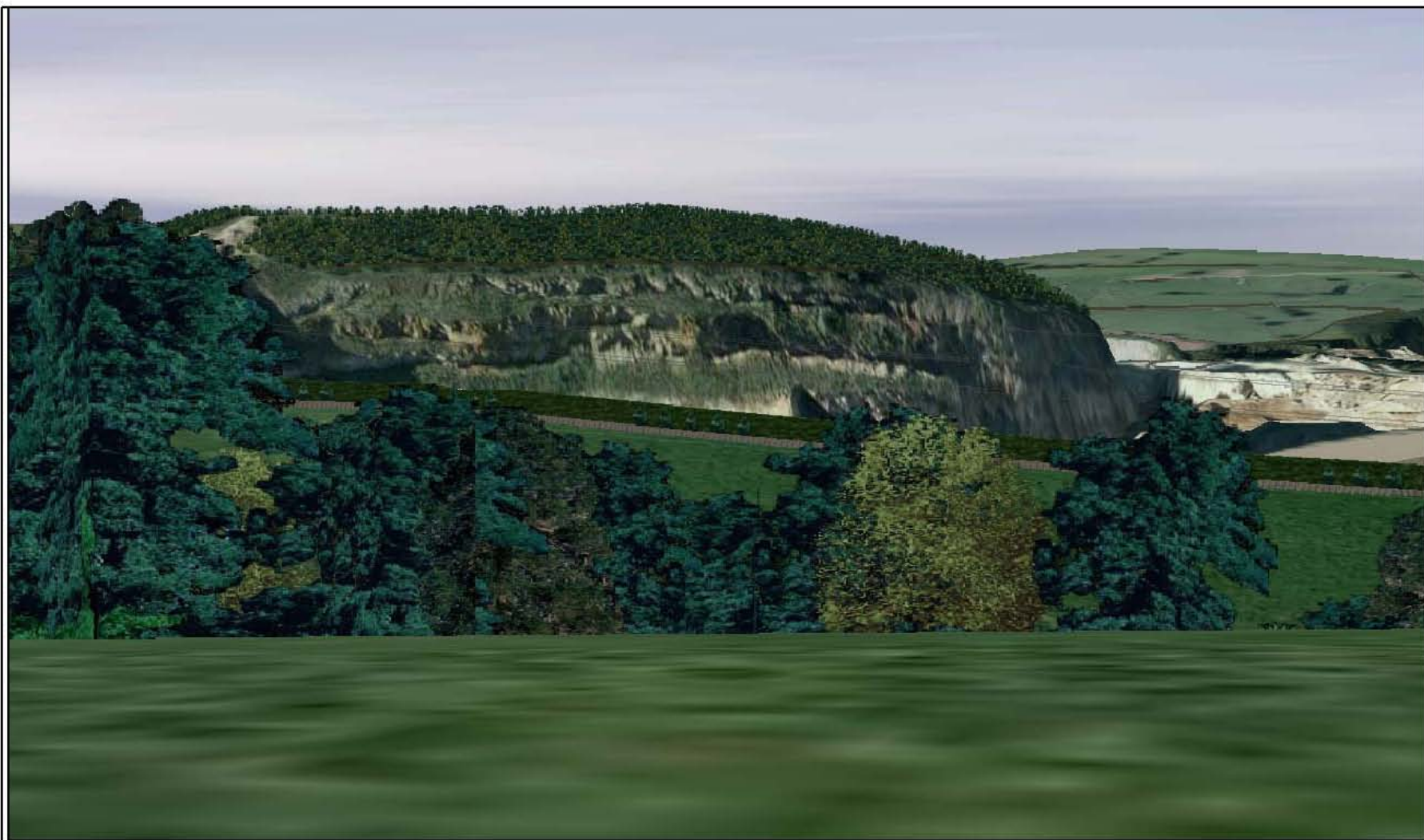
status

Existing view

details

GR SK 24706 57053  
Elevation 280m  
View bearing 266  
Distance to extension area 397m

Horizontal field of view 90 degrees



**title**

**Viewpoint one.  
From footpath below Ible.  
Photomontage**

**status**

**Phase 3 excavation**

**details**

**GR SK 24706 57053  
Elevation 280m  
View bearing 266  
Distance to extension area 397m**

# Policy

- National Planning Policy Framework

- Facilitating the sustainable use of minerals

- maximises the extraction of a mineral resource of local and national importance
    - economic benefits
    - adequate provision of industrial minerals
    - environmental protection

- Derbyshire Minerals Local Plan

- ‘Saved’ MLP Policy MP25 Industrial Limestone:

- required to meet a proven need for materials, and
    - the development is designed to maximise the recovery of the particular materials required to supply that need



Influence of topography on mineral ratios

# Conclusions

- Unique high purity/low contaminant carboniferous limestone deposit
- Established quarry operation and company employing 50 local people
- Application proposes a minor extension to maximise recovery of this valuable asset
- It is NOT an application to primarily release additional aggregate reserves
- Initial conclusions of Environmental Impact Assessment indicate no overriding constraints that cannot be accommodated through either appropriate design, mitigation and/or control through planning conditions
- Proposals are considered to accord with the policies of the NPPF and relevant 'saved' policies of the Derbyshire Minerals Local Plan

Thank you